

679

162

HNSA thanks Ed Zajkowski for his generous loan of the original document used to create this online version.

AO 106

DOWNGRADED TO
UNCLASSIFIED
 AUTHORITY: BUSHIPS NOTICE 5510 OF 29 DEC 1953
 DATE 11/12/54 BY R. J. Aenbauer L.B.N.S.

BOOKLET OF GENERAL PLANS

TITLE AND NUMBER OF PLANS	
TITLE	PLATE NO.
COVER AND TITLE PAGE	1
GENERAL DIMENSIONS AND DATA	2
OUTBOARD PROFILE	3
INBOARD PROFILE	4
BRIDGES	5
FORECASTLE, BRIDGE AND POOP DECKS	6
UPPER DECK	7
SECOND DECK	8
HOLD	9
INNER BOTTOM	10
CROSS SECTIONS	11

CORRECTED TO SUIT SHIP		
PLACE	DATE	APPROVED
LONG BEACH NAVAL SHIPYARD	21 MARCH, 1952	<i>W. J. Cross for Design Supt.</i>
LONG BEACH NAVAL SHIPYARD BY FORSTER DESIGN AGENCY TERMINAL ISLAND, CALIF.	29 Dec. 1954	<i>K. E. Taylor/g</i>
SAN FRANCISCO NAVAL SHIPYARD ^{REF}	15 MAR. 1956	<i>E. A. Piber</i>
FOR THE LONG BEACH NAVAL SHIPYARD BY HARCO ENGINEERING CO. TERMINAL ISLAND, CALIF.	5 June 1958	<i>K. E. Taylor/g</i> DESIGN SUPERINTENDENT
LONG BEACH NAVAL SHIPYARD BY FORSTER DESIGN AGENCY TERMINAL ISLAND, CALIF.	4 Oct. 1960	<i>B. A. Rourke</i> DESIGN SUPT.

PREPARED BY
LONG BEACH NAVAL SHIPYARD
 LONG BEACH, CALIF.

FINISHED PLAN EXAMINED AND FOUND CORRECT

DATE: 17 Aug. 1969 *E. A. Taylor*
 DESIGN SUPERINTENDENT

BUSHIPS NO. AO 106-SO103-883883

GENERAL INFORMATION

LENGTH BETWEEN PERPENDICULARS (MEASURED)	524'- 7 1/4"
LENGTH OVER-ALL (MEASURED)	552'- 6"
BREADTH, EXTREME (MEASURED)	75'- 2 1/2"
DRAFT ABOVE BASE LINE	29'-10 1/2"

HEIGHTS OF LIGHTS

ABOVE DESIGN WATER LINE (29'-10 1/2" ABV. B.L.)

☉ OF ACFT. WARN. LT. P/S - RADAR MAST	86'-11"
☉ OF FWD SPEED LT - ATOP OF FOREMAST	87'- 7"
☉ OF AFT SPEED LT - ATOP OF MAINMAST	86'- 6"
RANGE LIGHT	86'-11"
MASTHEAD LIGHT	57'- 8"
SIDE LIGHT (P) & (S)	34'- 5"
ANCHOR LIGHT (FORD)	49'- 3"
ANCHOR LIGHT (AFT)	32'- 8"
☉ STERN LIGHT - WHITE (S-NEAR ☉)	29'- 0"
☉ STERN LIGHT - BLUE (P-NEAR ☉)	30'-11"
☉ WAKE LIGHT	28'- 4"
MAN OVERBOARD & BREAK DOWN LIGHT - UPPER	80'-10"
MAN OVERBOARD & BREAK DOWN LIGHT - LOWER	73'-10"
BLINKER LIGHT P/S	81'- 0"
HORIZONTAL SEPARATION OF RANGE ☉ MASTHEAD LTS.	112'- 0"
VERTICAL DIFF. BETWEEN RANGE ☉ MASTHEAD LTS.	29'- 3"
VERTICAL DIFF. BETWEEN FWD. ☉ AFTER ANCHOR LTS.	17'- 2"

SMALL BOATS

NO	NAME	NO MEN	TOTAL MEN
19	15 MAN CO ₂ INFLATABLE RUBBER LIFE BOATS	15	285
2	40' MOTOR LAUNCHES	90	180
1	26' MOTOR WHALE BOAT	22	22
1	35' CAPTAINS GIG	27	27

TOTAL 514

HEIGHTS OF DECKS AND FLATS

ABOVE BASE LINE

BRIDGE DECK (FR 75 AT ☉)	49'- 6 5/8"
UPPER BRIDGE DECK (FR 75 AT ☉)	57'- 6 5/8"
NAVIGATION BRIDGE (FR 75 AT ☉)	65'- 6 5/8"
PILOT HOUSE TOP (FR 75 AT ☉)	73'- 6 5/8"

UPPER DECK FLAT	4 3'-10 3/8"
POWER DRIVE FLAT FR. 33 TO 36 1/2	59'-10 3/8"
STEERING GEAR FLAT (STERN TO FR. 13)	35'- 0"
UPPER AMM. FLAT (FR. 7 TO 13)	27'- 1"
BOILER FLAT (FR. 13 TO 33)	26'- 6"
GENERATOR FLAT (S - FR 33 TO 48)	32'- 6"
MACHINERY FLAT (P - FR 33 TO 48)	32'- 6"
SWITCHBOARD FLAT (FR. 41 TO 48)	32'- 6"
AMM. FLAT (FR. 84 TO 90)	18'-10 1/2"
AMM. FLAT (FR. 103 TO 108)	5'- 8"
AMM. FLAT (FR. 103 TO 108)	13'- 8"
AMM. FLAT (FR. 103 TO 108)	21'- 8"
AMM. FLAT (FR. 103 TO 108)	29'- 8"

ACCOMMODATIONS (BERTHING)

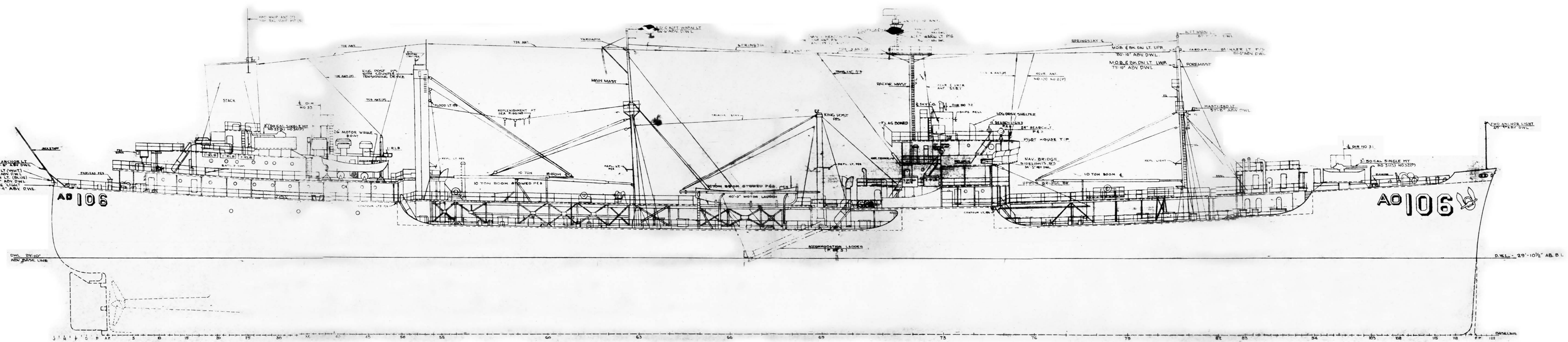
	UPPER DECK	FOC'S'LE DECK	BRIDGE DECK	UPBRIDGE DECK	NAV. BRIDGE	BOAT DECK
COMMANDING OFF W.R. OFFICERS			10	1	1 (EMERG)	7
C.P.O.		18				
CREW	252					
TOTAL BERTHING 290						

ACCOMMODATIONS (LOCKERS)

	UPPER DECK	POOP DECK
C.P.O.		21
CREW	266	
TOTAL LOCKERS 287		

GENERAL DIMENSIONS

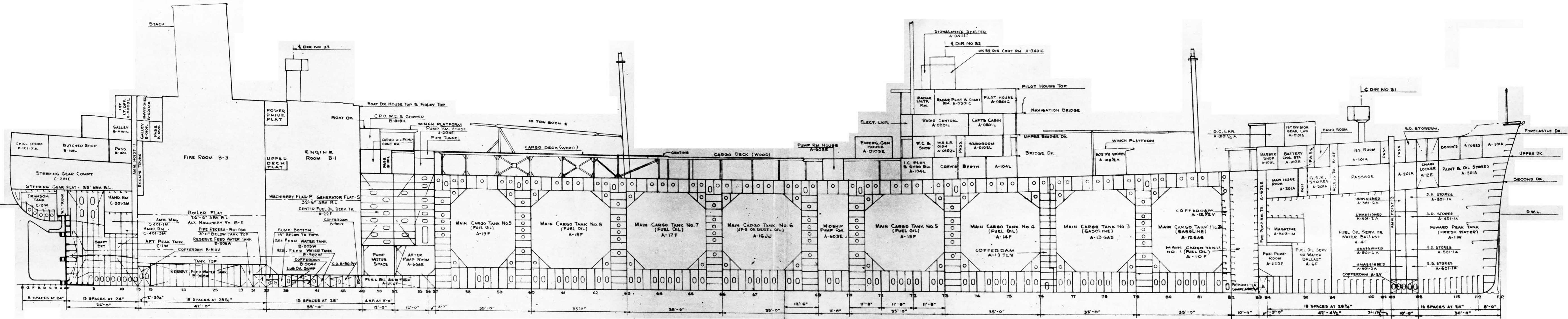
BUSHIPS NO. A0106 - S0103 - 883883



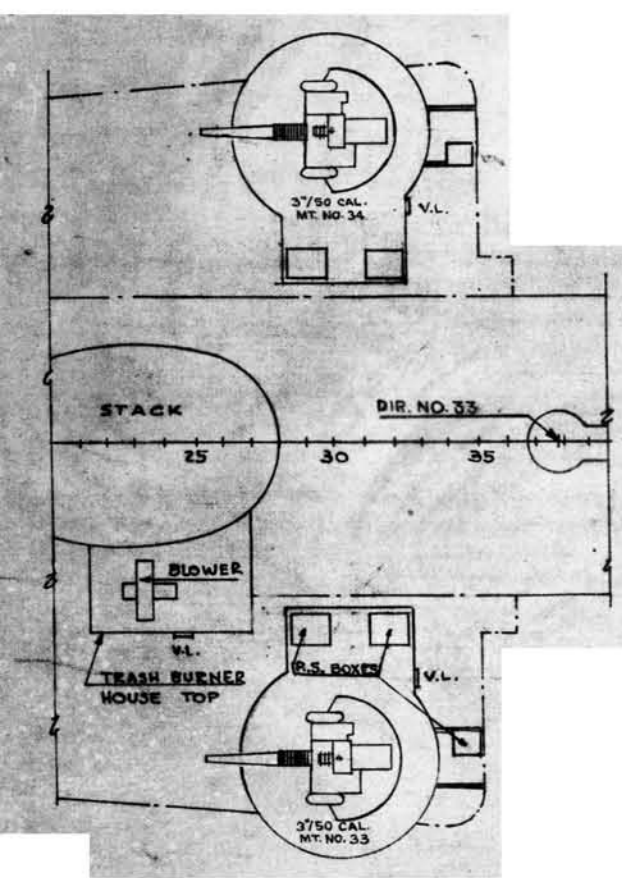
OUTBOARD PROFILE

SCALE: 1/16" = 1'-0"

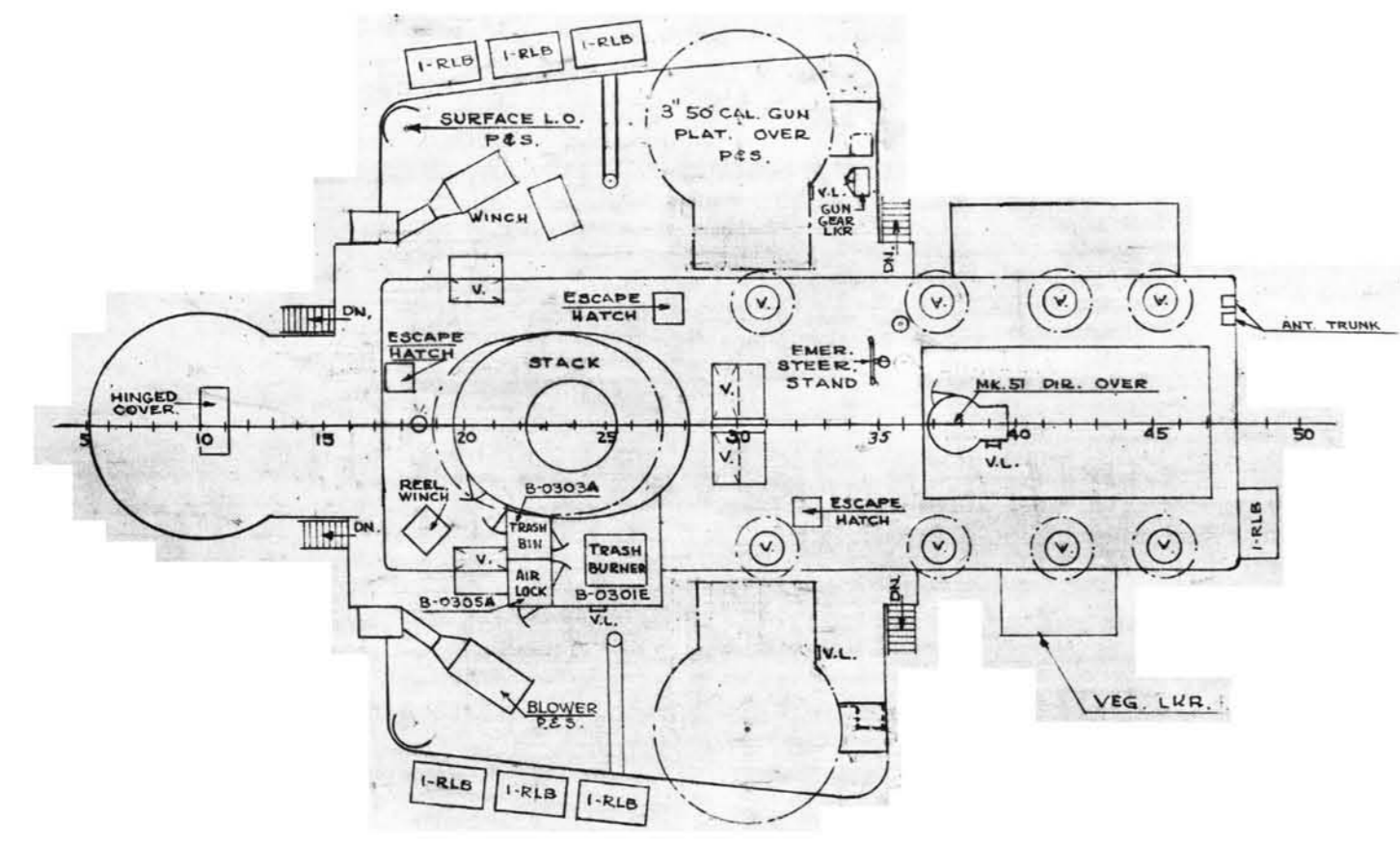
BUSHIPS NO. A0106-S0103-883683



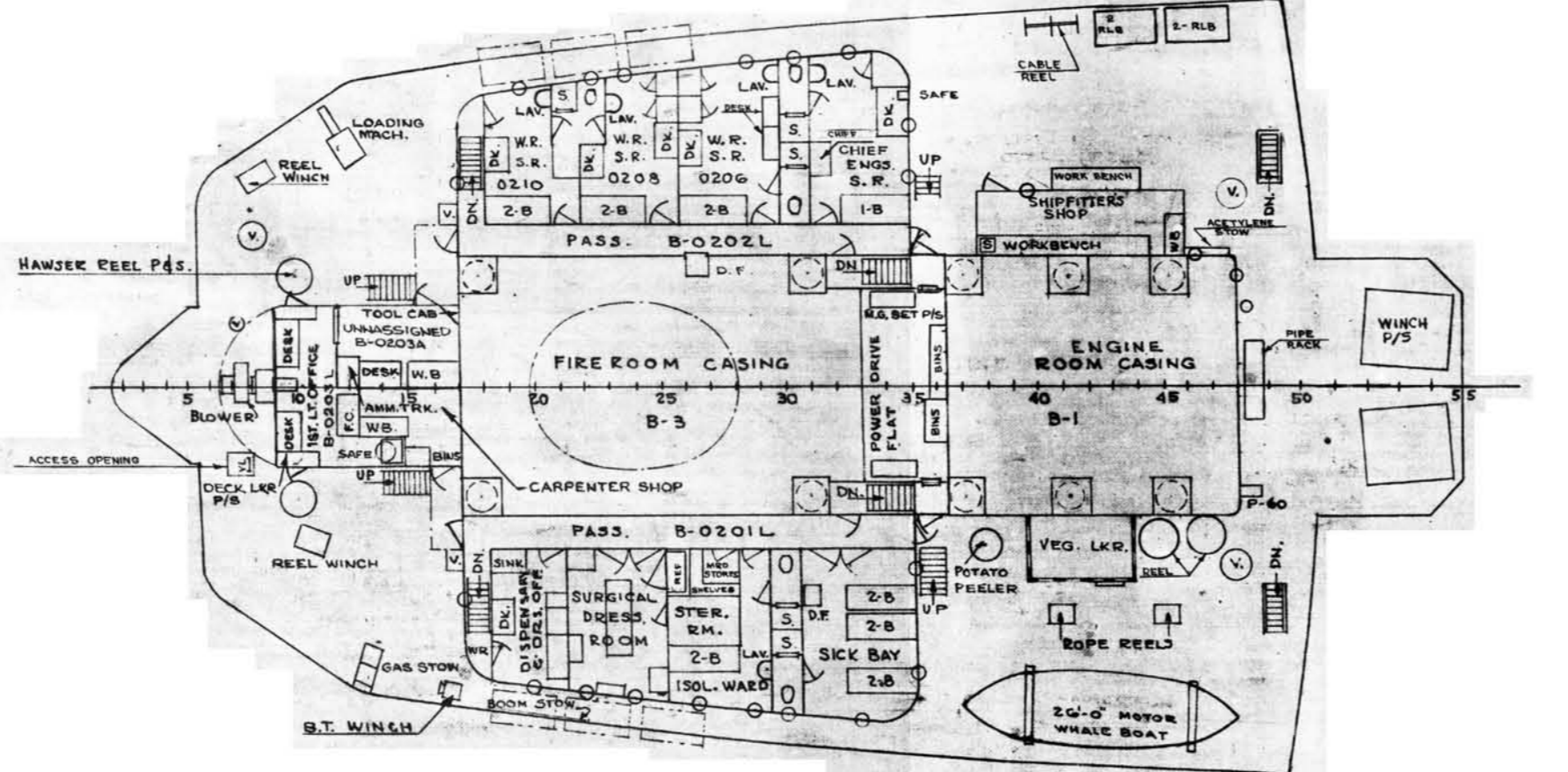
INBOARD PROFILE
 SCALE: 1/16"=1'-0"
 BUSHIPS NO. A0106-S0103-883883



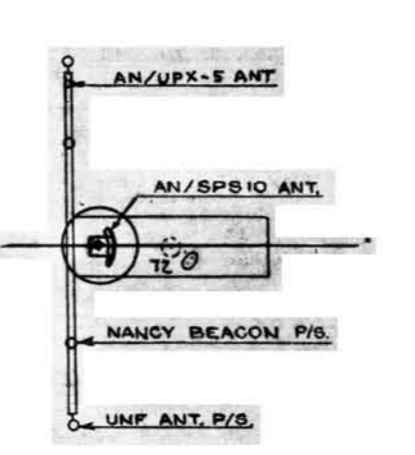
3/50 CAL. GUN PLATFORM



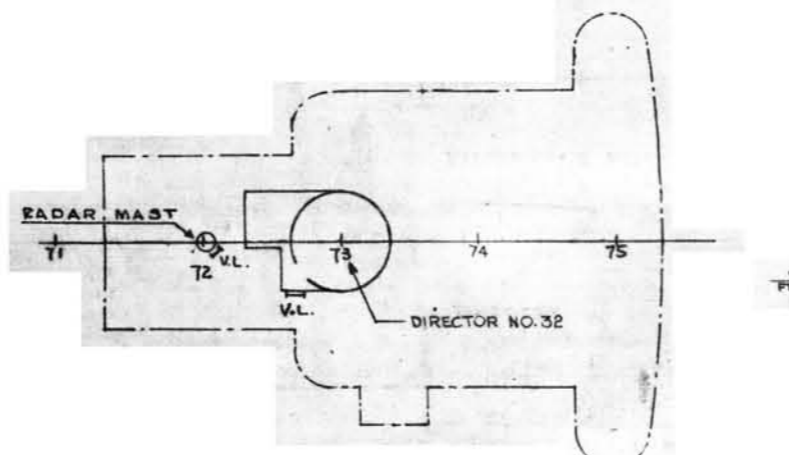
BOAT DECK HOUSE TOP & FIDLEY TOP



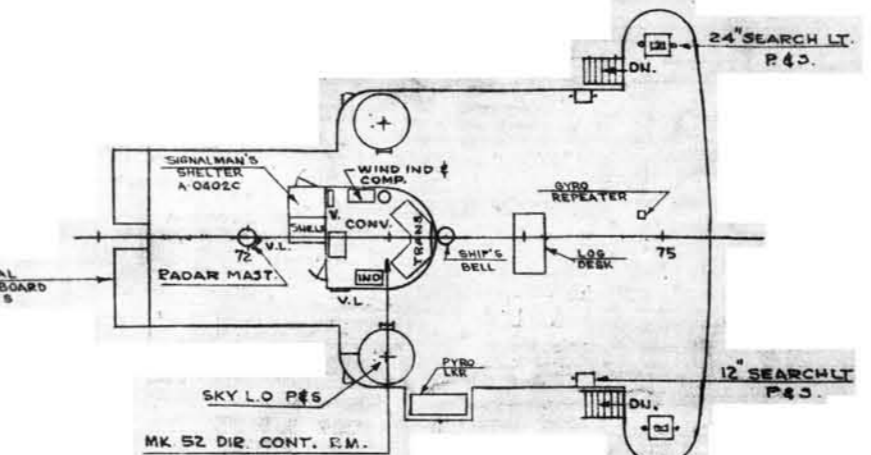
BOAT DECK



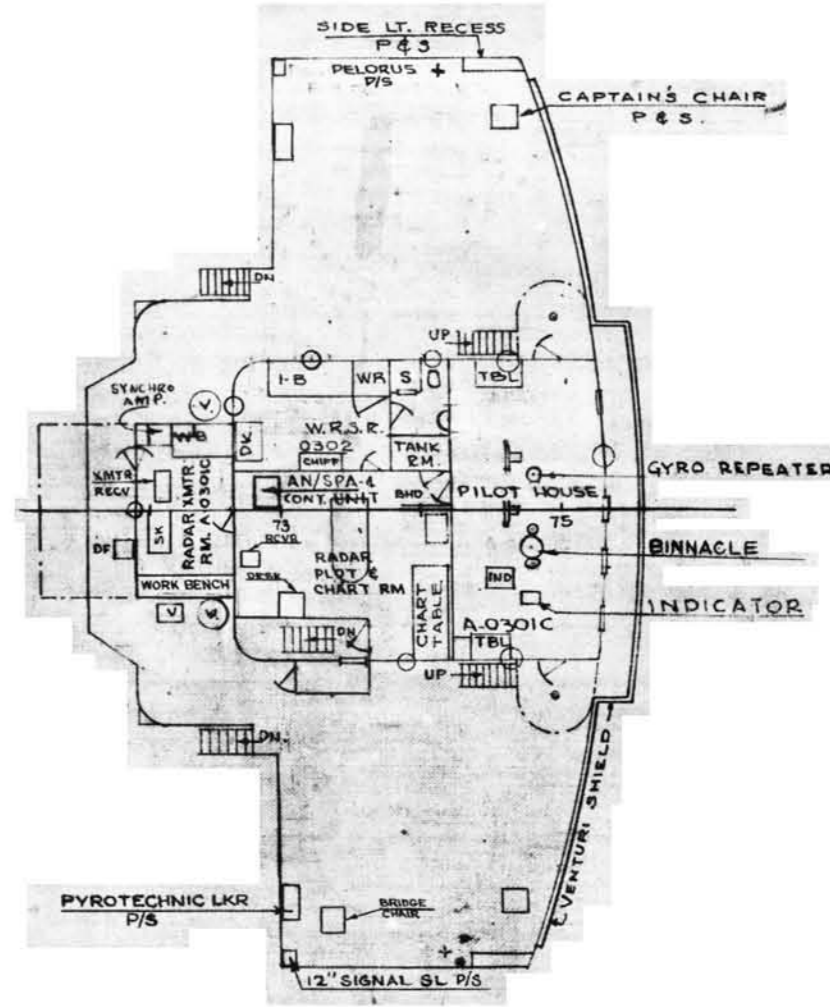
RADAR PLAT.



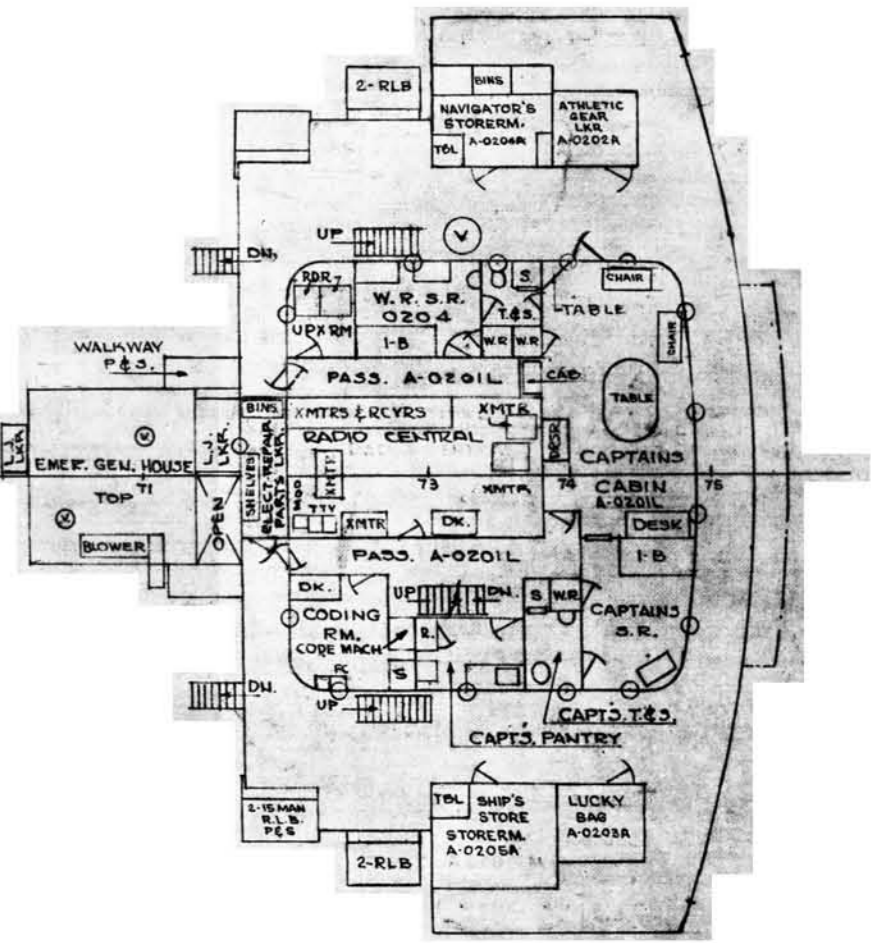
DIRECTOR & RANGEFINDER PLATS.



PILOT HOUSE TOP

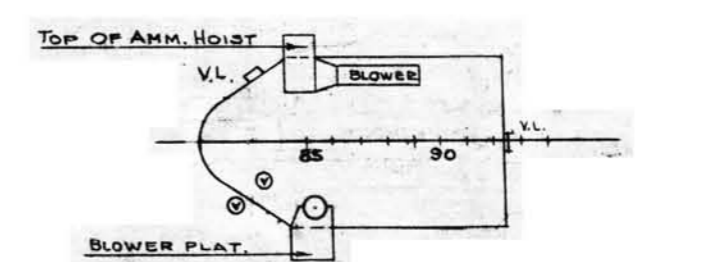
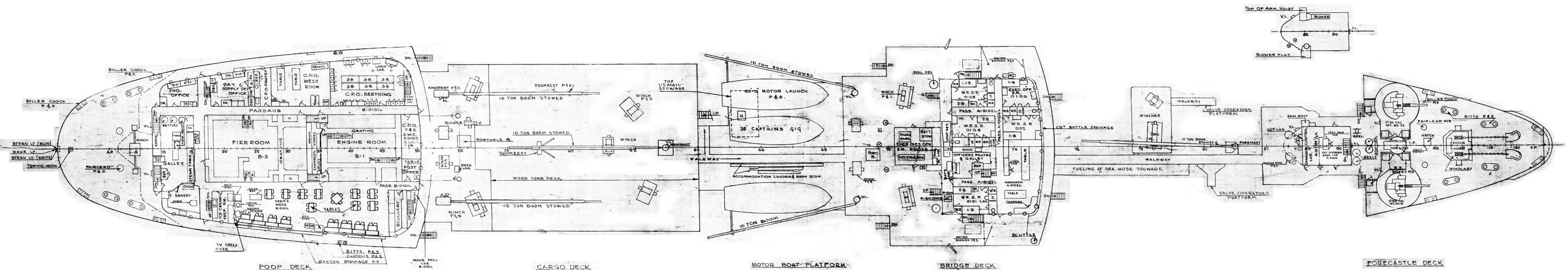


NAVIGATION BRIDGE

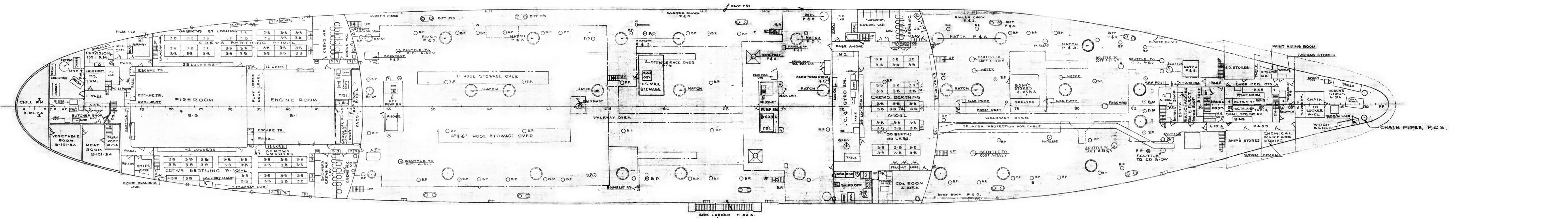


UPPER BRIDGE DECK

BRIDGES
SCALE 1/16" = 1'-0"
BUSHIPS NO. A0106-50103 - 883883

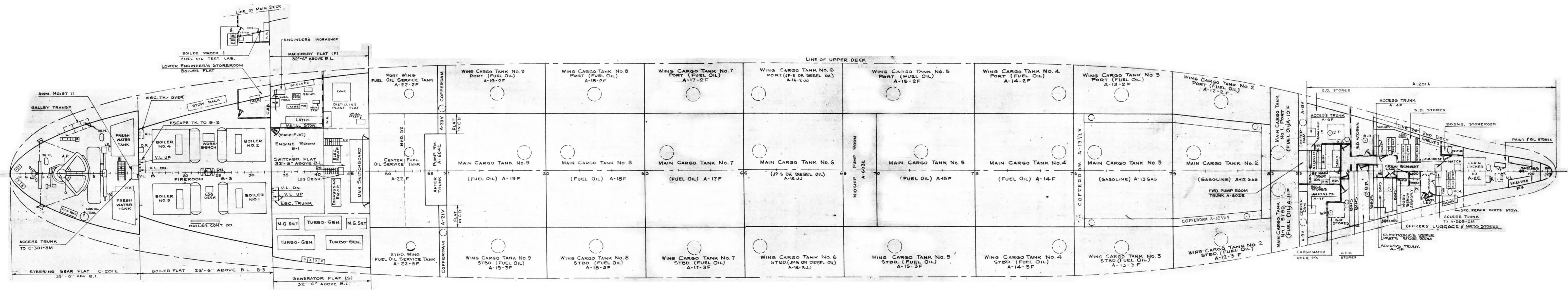


FOCSE, BRIDGE & POOP DECKS
 SCALE 1/16"=1'-0"
 BUSHIPS NO. AO 106-50103 - 883883

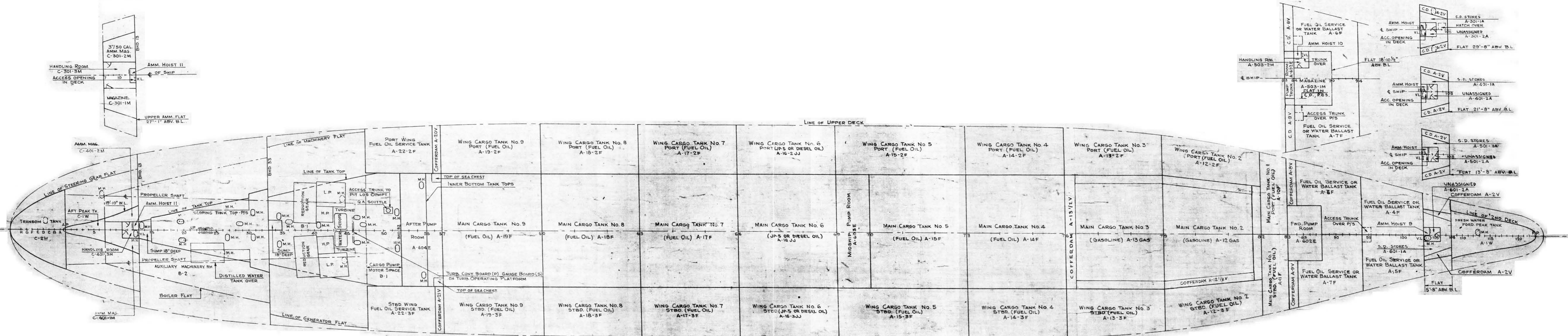


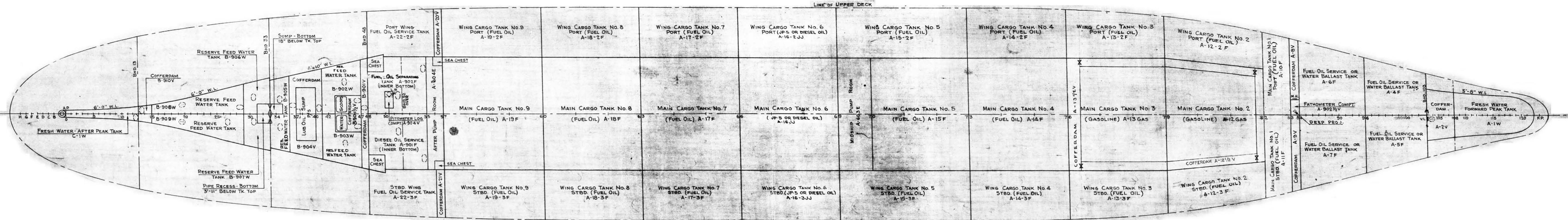
UPPER DECK

SCALE 1/16"=1'-0"

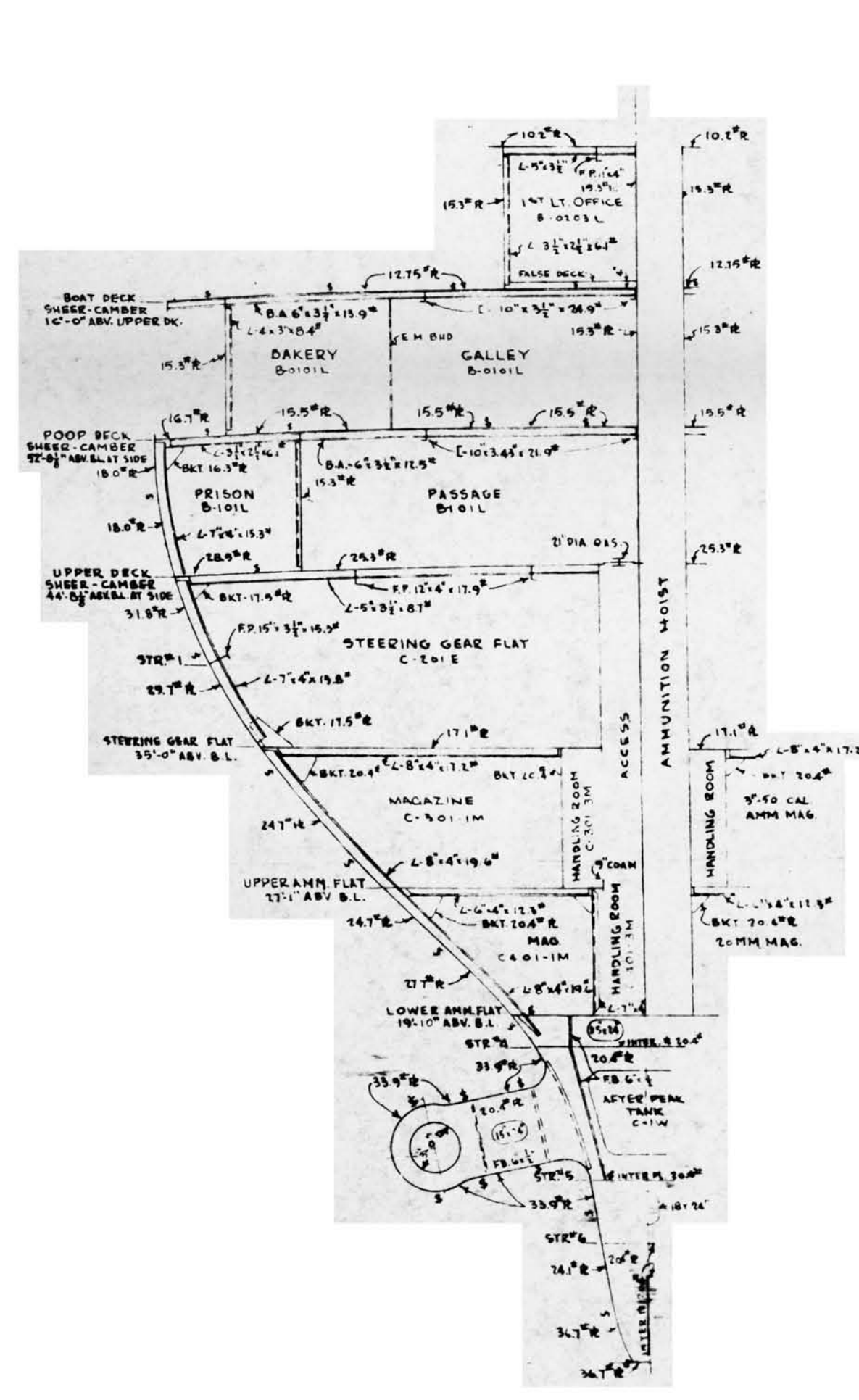


SECOND DECK
 SCALE: 1/16"=1'-0"
 BUSHIPS NO. A0106-S0103-883883

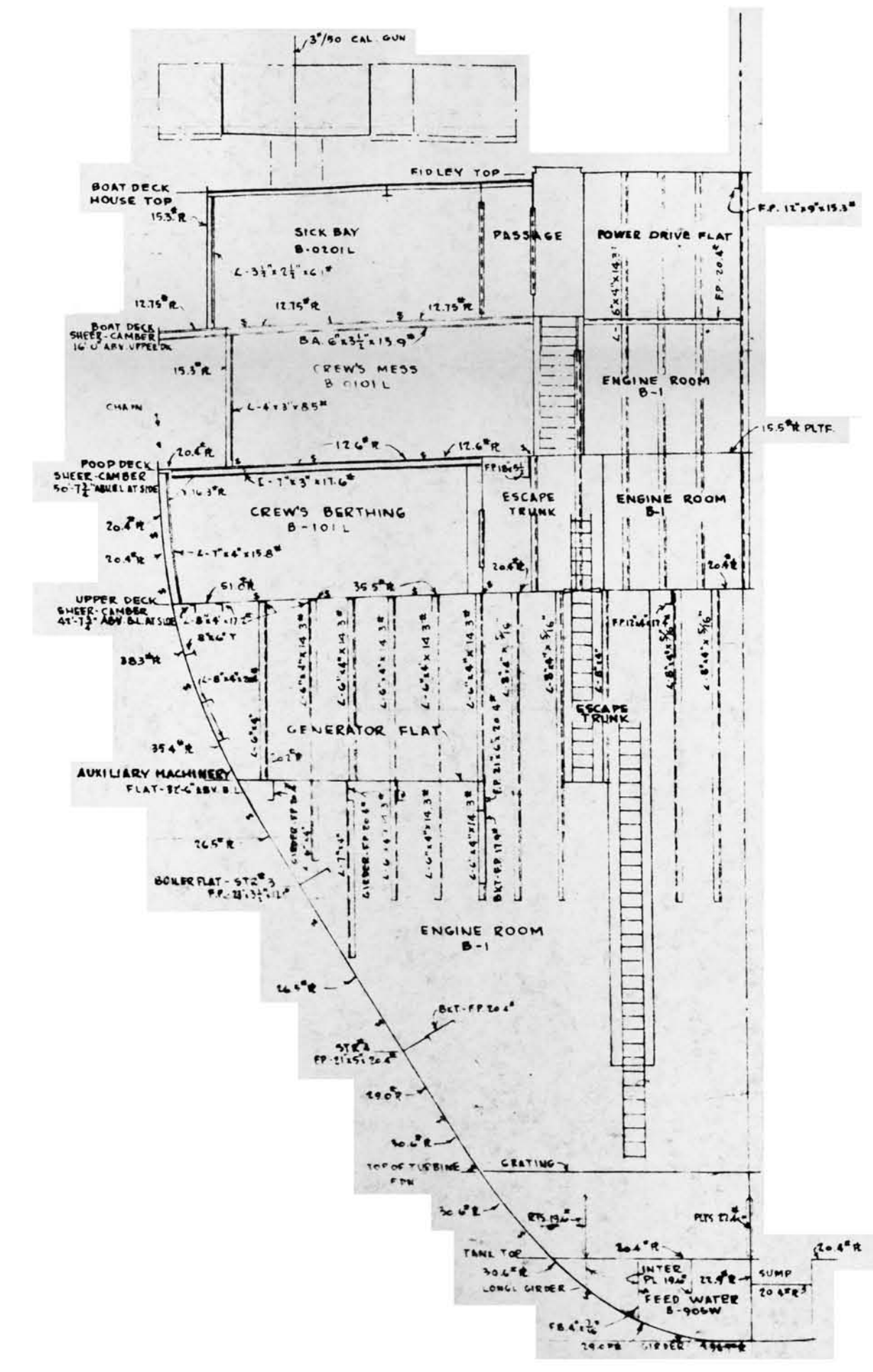




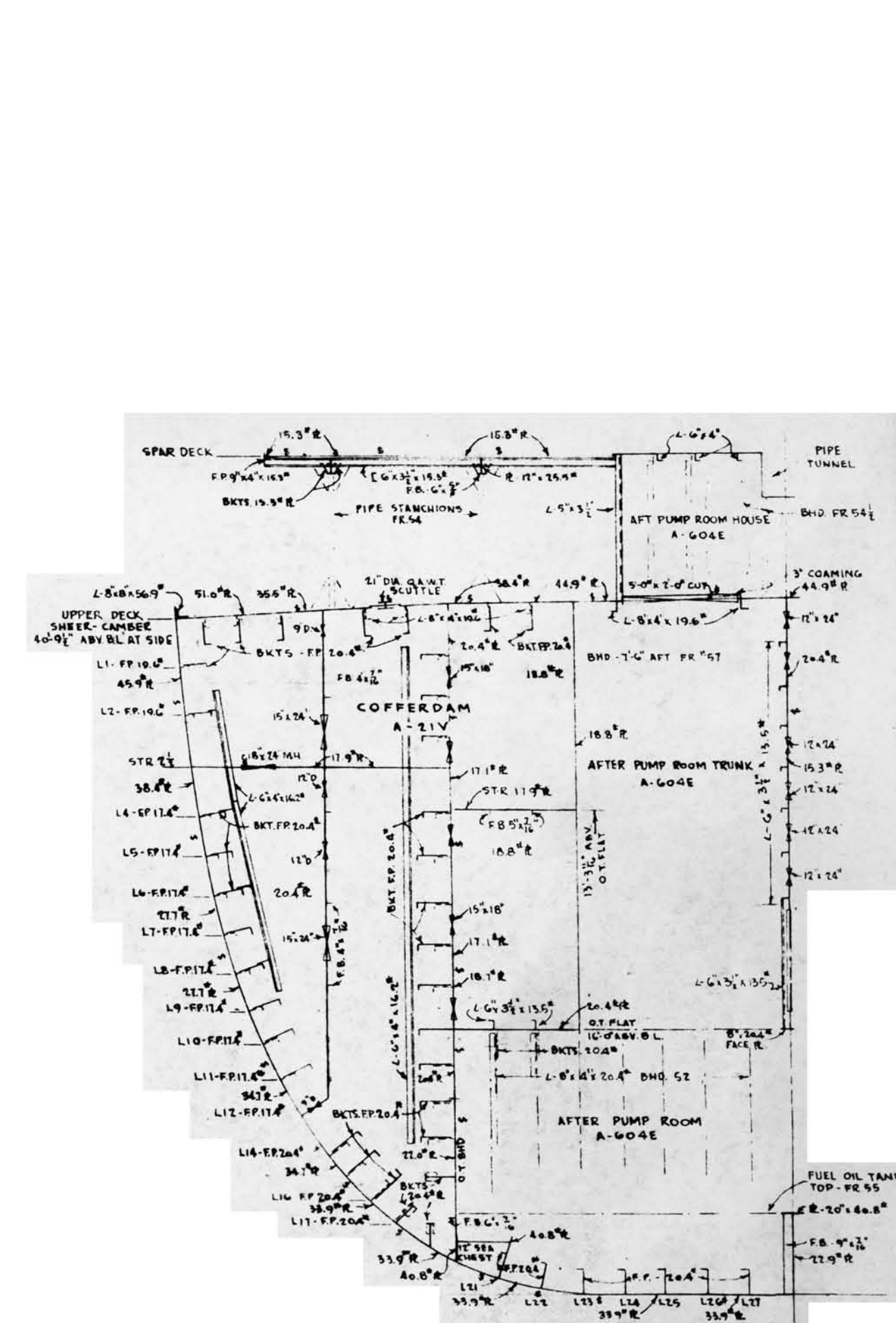
INNER BOTTOM
 SCALE: 1/16"=1'-0"
 BUSHIPS No. A0106-50103-883883



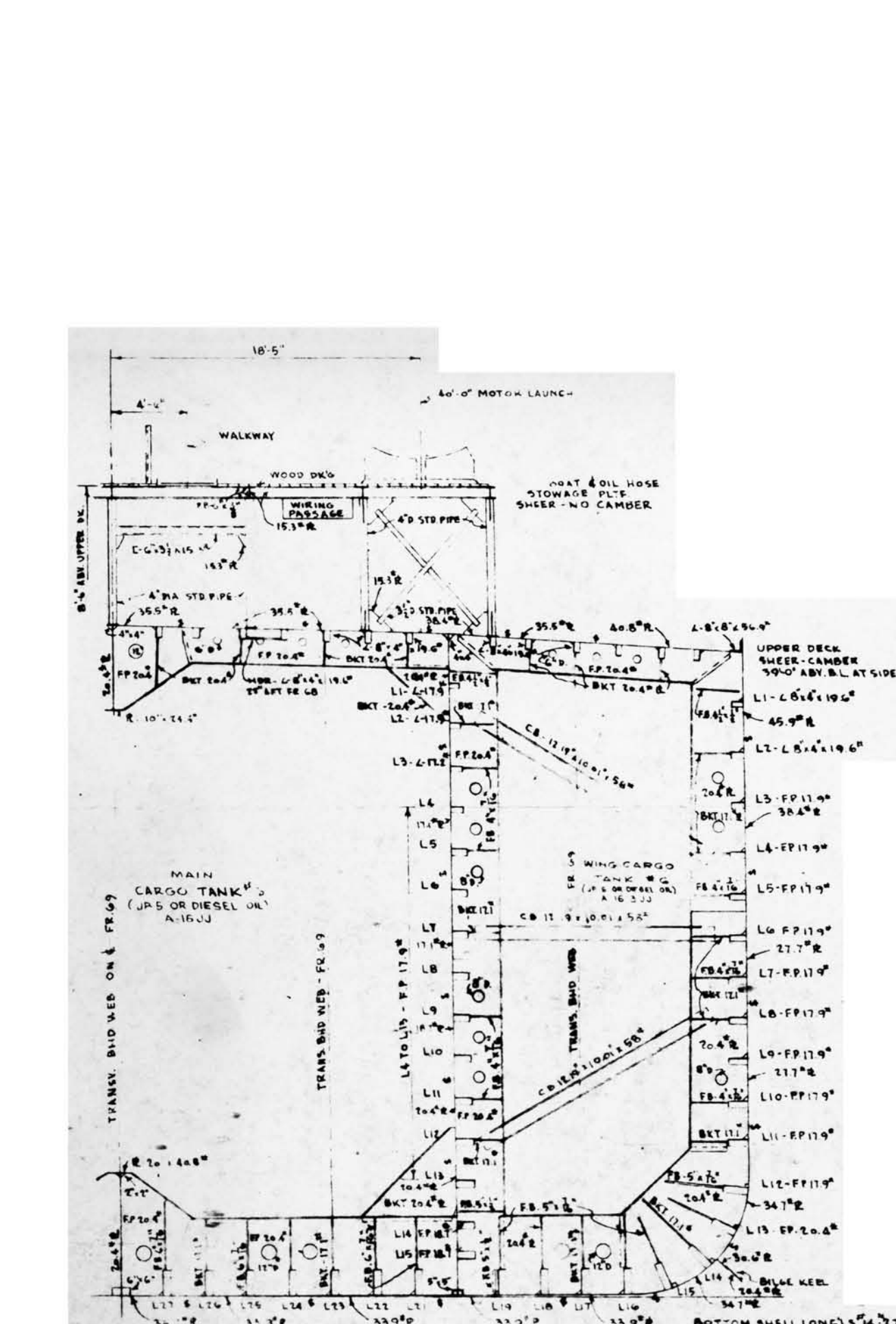
SECTION - FR. 12
LOOKING AFT



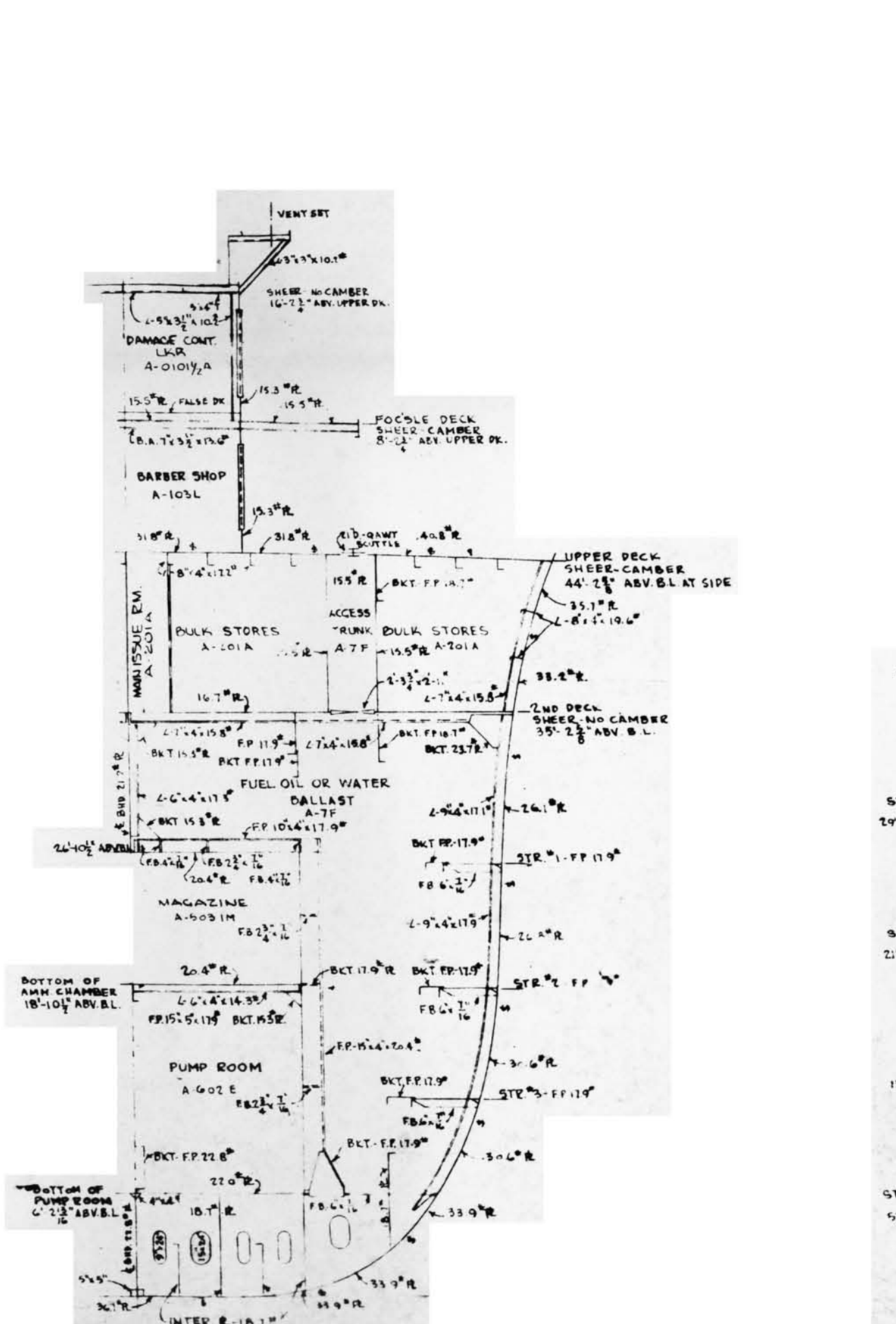
SECTION - FR. 33
LOOKING AFT



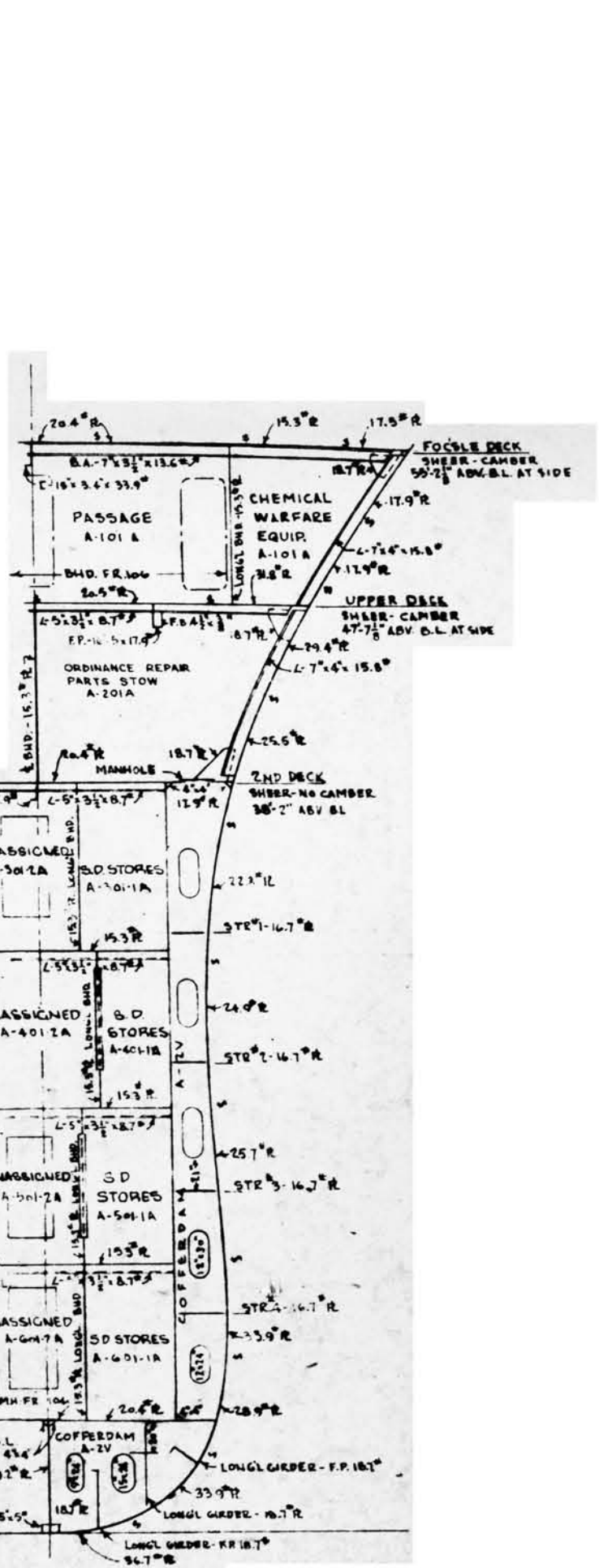
SECTION - FR. 56
LOOKING AFT



MIDSHIP SECTION
10' AFT OF FR. 68 LOOKING FORD



SECTION - FR. 85
LOOKING FORD



SECTION - FR. 105
LOOKING FORD

CROSS SECTIONS

SCALE: 1/8" = 1'-0"

BUSHIPS, NO. A0106 - 50103 - 883883